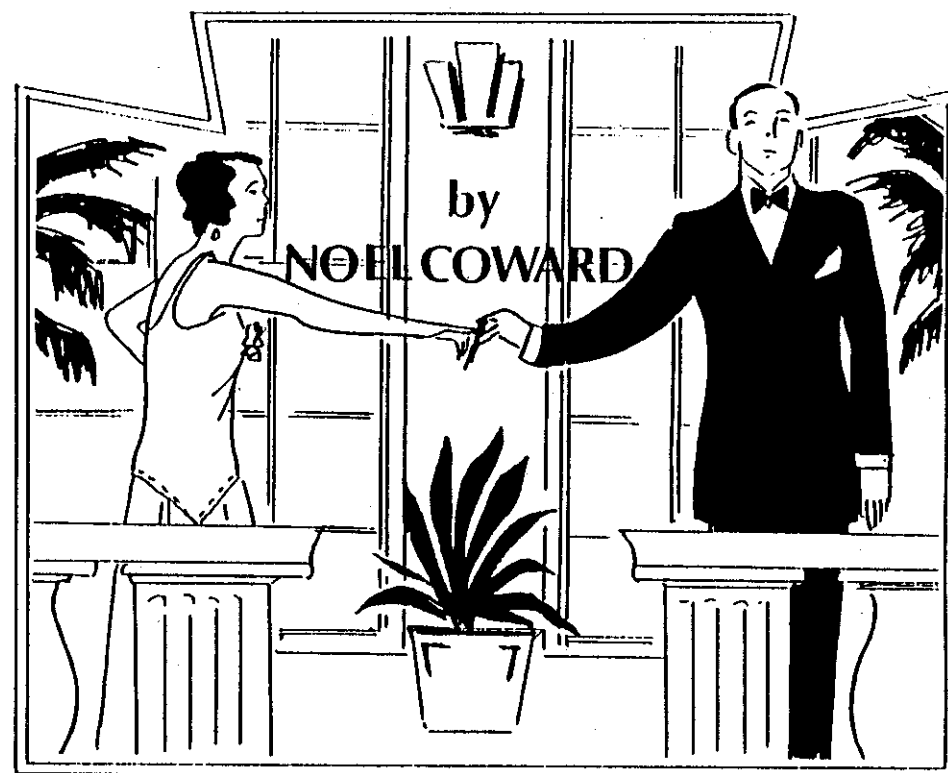


PAST PRODUCTIONS

As Good as New	1981
Lord Arthur Savile's Crime	1982
Blithe Spirit	1983
Night Must Fall	1984
Cat on the Fiddle	1985
A Murder Has Been Arranged	1986
Abigail's Party	1987
Habeas Corpus	1987
Music Hall	1988
The Hollow	1988
The Farndale Avenue Housing Estate Towns - Women's Guild Dramatic Society's Murder Mystery	1989
Do Not Disturb	1990
More Tea Vicar	1990
When We Are Married	1991
Cinderella	1991
The Farndale Avenue Housing Estate Towns - Women's Guild Dramatic Society's Production of Macbeth	1992
Confusions	1992

*THANK YOU FOR SUPPORTING OUR PRODUCTION
OF "PRIVATE LIVES". WE LOOK FORWARD TO
SEEING YOU AGAIN IN NOVEMBER FOR OUR
SECOND PANTOMIME.*

THE SMARDEN PLAYERS *present* **PRIVATE LIVES**



Spring 1993

CAST In Order of Appearance

Sibyl Chase	Tina Ray
Elyot Chase	Peter Gibbs
Victor Prynne	Hilary Millen
Amanda Prynne	Lea Randolph
Louise (A French Maid)	Rosemary Heathcote

Director & Set Designer	Clare Hiscock
Stage Manager	Jan Turney
Lighting	Roger Birch Geoff Fletcher
Sound	Ian Mills
Programme & Set Artist	Lucy Rumjahn
Costume Designer	Molly Sharp
Costume Assistant	Rosemary Underdown
Set Construction	P Gibbs, Hilary Millen & M Hiscock (assisted by Members)
Prompt	Ann Adcock
Front of House	Marcus & Patricia Palmer
Bar	Richard Burden
Flower Girls	Abigail Heathcote Ann Barkway

"PRIVATE LIVES" - an Intimate Comedy in Three Acts

ACT I : Evening - Hotel Terrace in France by
The Water side.

Interval - 15 Minutes

ACT II : Amanda's Flat in Paris a few Days later
about 10 o'clock in the Evening

Interval - 10 Minutes

ACT III: Amanda's Flat the next Morning

BAR

The bar will be open during both intervals,
before and after performance.

THANKS

*"Smarden Players" would like to thank
the Post Office for acting as Box Office
for our performances and the Bell Inn for
their continued support.*