

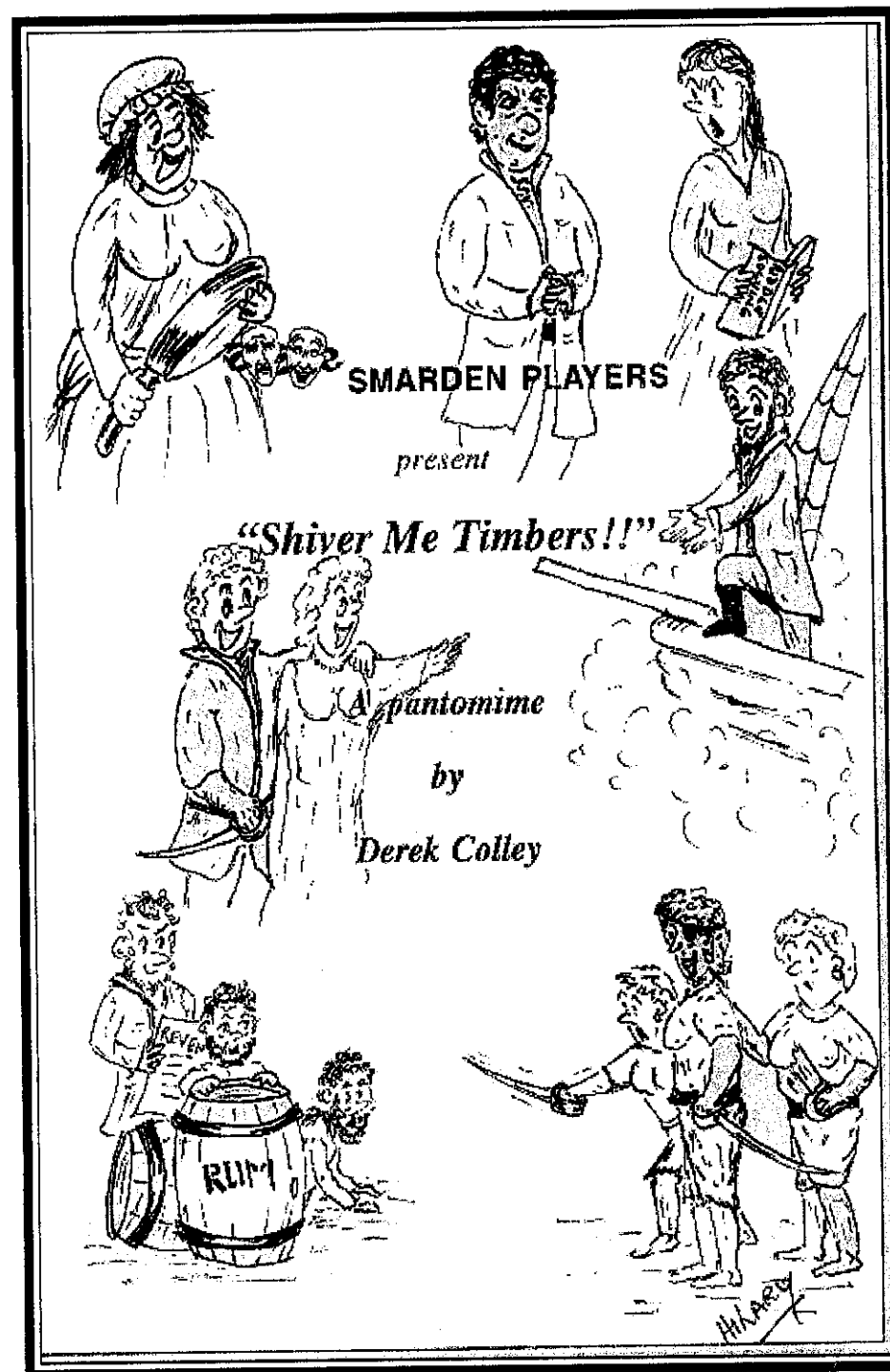
Past Productions

As Good As New	1981
Lord Arthur Savile's Crime	1982
Blithe Spirit	1983
Night Must Fall	1984
Cat On The Fiddle	1985
A Murder Has Been Arranged	1986
Abigail's Party	1987
Habeus Corpus	1987
Music Hall	1988
The Hollow	1988
The Farndale Avenue Housing Estate	
Townswomen's Guild Dramatic Society's	
Murder Mystery	1989
Do Not Disturb	1990
More Tea Vicar	1990
When We Are Married	1991
Cinderella	1991
The Farndale Avenue Housing Estate	
Townswomen's Guild Dramatic Society's	
Production Of Macbeth	1992
Confusions	1992
Private Lives	1993
Dick Whittington	1993
Music Hall	1993
Family Planning	1994
A Chorus Of Disapproval	1994
How The Other Half Loves	1995
We'll Meet Again	1995
The Witch's Revenge	1995
What the Butler Saw	1996
A Funny Thing Happened On The Way	
To The Forum	1996
Steel Magnolias	1997

Our next production will be held on Friday, 1st and Saturday, 2nd May 1998, here at the Village Hall.

Our thanks to The Post Office, The Flying Horse, The Chequers Inn, The Bull at Bethersden, and The Rose and Crown for acting as box offices.

If you are interested in joining the Swarden Players, whether on stage, backstage, or front of house, please let us know, as new members are always warmly welcomed.



Cast in Order of Appearance

Aggie	<i>Maid to Lady De Vine</i>	Geraldine Dyer
Nightshade	<i>Servant to Lady De Vine</i>	Derek Colley
Lady De Vine	<i>Lady of the Manor</i>	Lea Randolph
Joshua Watt	<i>Fisherman</i>	Peter Gibbs
Arbuthnot Latham	<i>Simple Fisherman</i>	John Freeman
Lucy	<i>Our Heroine</i>	Tina Ray
Potty Lotty	<i>A Soothsayer</i>	Hilary Millen
Mr Reardon	<i>A Stranger</i>	Mike Twort
Billy	<i>Our Hero</i>	Mike Darby
Long Jane Silver	<i>The Pirate Queen</i>	Rosemary Freeman
1st Pirate		Kathy Gibbs
2nd Pirate		Patricia Palmer
Gaoler		Geoff Fletcher
The Sea Captain		Peter Edgson-Wright
The Professor		Anthony Berger

Directed by Peter Gibbs & Lea Randolph

Musical Director Bob Barnes

Percussion	Ken Wellard
Lighting	Roger Birch
Set Design	Lucia Fisher
Prompter	Dorothy Gee
Front of House	Marcus Palmer • Peter Glass • Mark Wilson
Backstage	Keith De la Plain • Karen Helmsley

Shiver Me Timbers!!

Our pantomime is set in a fishing village, at some time in the middle of the last century.

ACT 1

Scene 1	De Vine Hall	Late afternoon.
Scene 2	The Harbour	The following day.
Scene 3	Tredeager Bay	The middle of the night.
Scene 4	De Vine Hall	Early morning.

Interval 15 minutes.

ACT 2

Scene 1	The Pirate Ship	Later that morning.
Scene 2	The Gaol	Even later that morning.
Scene 3	The Harbour	Evening.
Scene 4	De Vine Hall	Later that evening.
Scene 5	The Harbour	Even later that evening.
Scene 6	Tredeager Bay	Midnight.

In De Vine Hall, Lady De Vine discovers that she could escape from debt and find wealth and happiness.

In Tredeager Harbour, Joshua Watt and Arbuthnot Latham have more than fishing on their minds. Will Joshua and Arbuthnot be able to help our poor hero and heroine, Billy and Lucy?

Who is Reardon, the mysterious stranger? What terrors will the Pirate Queen bring? And her crew? What horrors are lurking in the town gaol?

Perhaps only you, our audience, can ensure a happy ending.

Remember your big line :

"It's gone grotty, call Potty Lotty!"